



SSN: Transportation

Paul Jamason

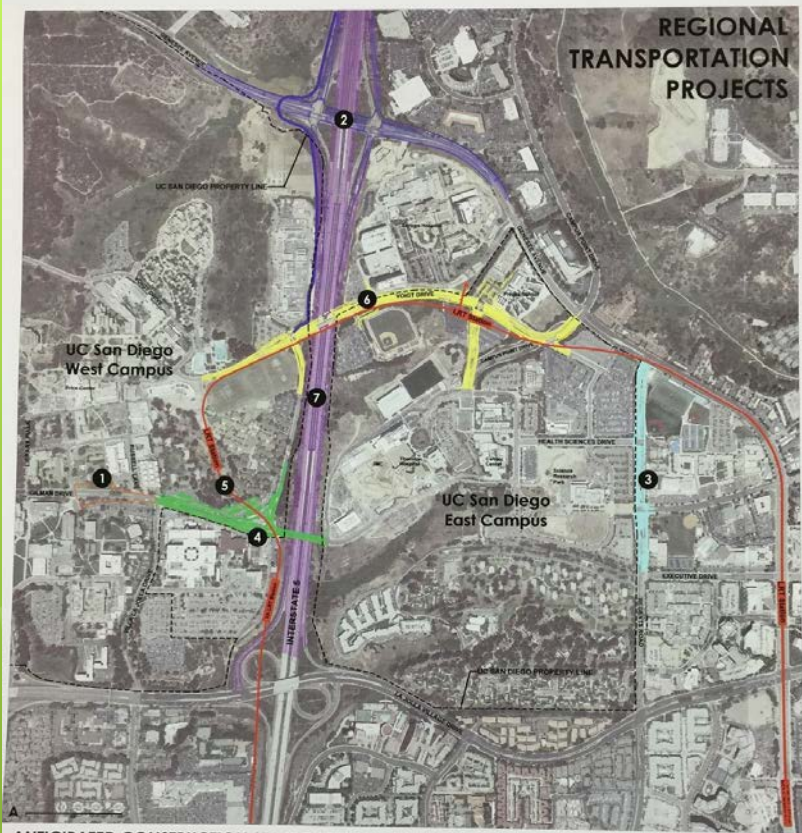
Transportation and Sustainability

- Transportation 2nd greatest GHG producer (28%)
- Alternative transit modes reduce emissions/congestion
- SD Metro: 76% drive alone
- SD Climate Action Plan: 18% mass transit (from 3%), 18% bike (from 1%) by 2030 in high-transit areas
- 59% of UCSD commuters use alternative transportation, up from 34% in 2000

UCSD Sustainability(?)

- “Sustainability is part of UCSD’s DNA”
- No outside funding for UCSD Transportation Division
- UCSD free bus zone terminated
 - \$54/month transit pass (Standard MTS 25% discount)
 - Student transit referendum fee: \$17/month
- UCSD supports SANDAG I-5 widening, yet no public transit planned for HOV lanes (Lexus lanes)
- SANDAG plan being sued by state for excess greenhouse gas emissions

REGIONAL TRANSPORTATION PROJECTS



ANTICIPATED CONSTRUCTION START DATES:

- 1 Gilman Transit Center: Complete
- 2 I-5/Genessee Avenue Interchange: 1st Qtr 2015
- 3 Regents Road Widening: 3rd Qtr 2015
- 4 I-5/Gilman: Road Realignment -1st Qtr 2015 / Bridge -1st Qtr 2016
- 5 Mid-Coast Corridor Light Rail Transit: 4th Qtr 2015
- 6 Voigt Bridge Replacement/Voigt Widening/Campus Point Realignment: 3rd Qtr 2016
- 7 I-5 Express Lanes/DAR: TBD

- Gilman Transit Center done
 - “Rapid” route 237 frequency reduced
- Class 2 bike lanes for widened Genessee, new Gilman bridge, Voigt
- Bike path from UCSD to Sorrento Valley train station

Trolley: 2019

- Trolley reduced SDSU parking permits by 6K
- Decreasing parking permits each year
- Pepper Canyon
 - Bike facilities
 - Public space
 - Retail



UCSD Bike Infrastructure

- http://ucsdnews.ucsd.edu/feature/creating_a_more_bike_friendly_campus
- Replace shared-use path with separate pedestrian and bicycle paths. New ADA accessible route from Peterson Hall to Geisel Library.
- Meeting with UCSD Bike Committee re: collaboration; MOVES Transportation Committee Associated Students
- Bike friendly campus certification?

Connecting Campus to Community

- New Mesa Apartments towers
 - New trolley station nearby (Executive Drive)
- Little off-campus student housing (vs SDSU)
- SD is least affordable city in the country
 - Among highest transportation costs in country due to auto costs
- UCSD designed around autos, suburban campus location
 - La Jolla Village Dr divides community/campus.
- Expensive area. Residents oppose new housing.