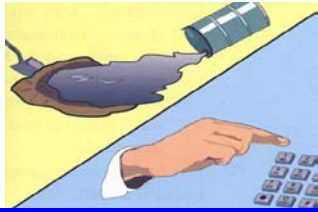


## BMP A02: Spill Prevention, Control & Cleanup



### Pollutants of Concern:

- Oil & Grease
- Equipment Fluids
- Vehicle Fluids
- Non-Storm Water Discharges (NSWDs)
- Hazardous Materials



Purpose:	To prevent or reduce the discharge of pollutants from spills into storm drains
Application:	Outdoor material storage areas, outdoor maintenance/work areas, and fueling areas
Practices:	<ol style="list-style-type: none"> <li>1. Locate chemical and/or hazardous materials storage and handling areas away from storm drains and natural watercourses.</li> <li>2. All containers of hazardous materials and waste must be kept closed when not in use, stored with secondary containment, and stored under cover to prevent exposure to rain water.</li> <li>3. Store and maintain appropriate spill cleanup materials in a location known to all personnel</li> <li>4. <u>Spill Response:</u> <ol style="list-style-type: none"> <li>1. Safety first! Review the Safety Data Sheet (SDS) for information regarding proper personal protective equipment, appropriate spill cleanup materials, and proper disposal of used cleanup materials (e.g., absorbents and rags)</li> <li>2. Try to stop or control the release at the source</li> <li>3. Use appropriate materials in spill kit to block the flow and prevent the release from discharging into a storm drain                             <ol style="list-style-type: none"> <li>a. Sweep dry spills -- do not wash or hose</li> <li>b. Absorb wet spills on concrete or asphalt. If used cleanup materials are hazardous, collect and dispose of through EH&amp;S. Use the online tag program to create the hazardous waste label for the container: <a href="http://blink.ucsd.edu/go/wastetag">http://blink.ucsd.edu/go/wastetag</a>.</li> <li>c. Do NOT leave used absorbent (e.g., dry sweep) on the ground</li> <li>d. Dig up wet spills on soil, including all exposed soils. Properly dispose of the soil through EH&amp;S (see above)</li> </ol> </li> <li>5. EH&amp;S can provide cleanup assistance for large spills and the disposal of contaminated materials. Contact EH&amp;S immediately if a spill enters a storm drain: <b>(858) 534-3660</b></li> </ol> </li> </ol>
Frequency & Maintenance:	<ol style="list-style-type: none"> <li>1. Visually inspect material use and storage areas for spills and to verify containers are in good condition on a regular basis.</li> </ol>

## **BMP A02: Spill Prevention, Control & Cleanup**

	<ol style="list-style-type: none"><li>2. Inspect spill kit provisions on a regular basis and replace as needed.</li><li>3. Maintain equipment to prevent leaks and spills</li></ol>
Training:	Maintenance, shops, trades, and theater staff that perform outdoor work activities that could contribute pollutants to the campus storm water system must take the <b>“Annual Shop &amp; Studio Environmental Compliance &amp; Hazard Awareness Training”</b> which includes storm water pollution prevention; spill prevention, control, and cleanup; SDSs; and hazardous materials and waste management.
Additional Information:	<ul style="list-style-type: none"><li>• UC San Diego’s Storm Water Management Program: <a href="http://stormwater.ucsd.edu">http://stormwater.ucsd.edu</a></li><li>• Refer to BMP A01 for housekeeping procedures</li><li>• Refer to BMP A03 for Preventative Maintenance</li><li>• UC San Diego’s Hazardous Waste Program: <a href="http://blink.ucsd.edu/go/menu/hazwaste">http://blink.ucsd.edu/go/menu/hazwaste</a></li><li>• The Environmental Management Facility (EMF) can provide assistance with hazardous waste management questions: <b>(858) 534-2753</b> or <a href="mailto:hazwaste@ucsd.edu">hazwaste@ucsd.edu</a></li></ul>