

60000 - CHANCELLOR'S UNIT Satisfaction with UC San Diego - Mean Scores



University of California, San Diego STAFF @ WORK SURVEY: 2015

Participation Summary:

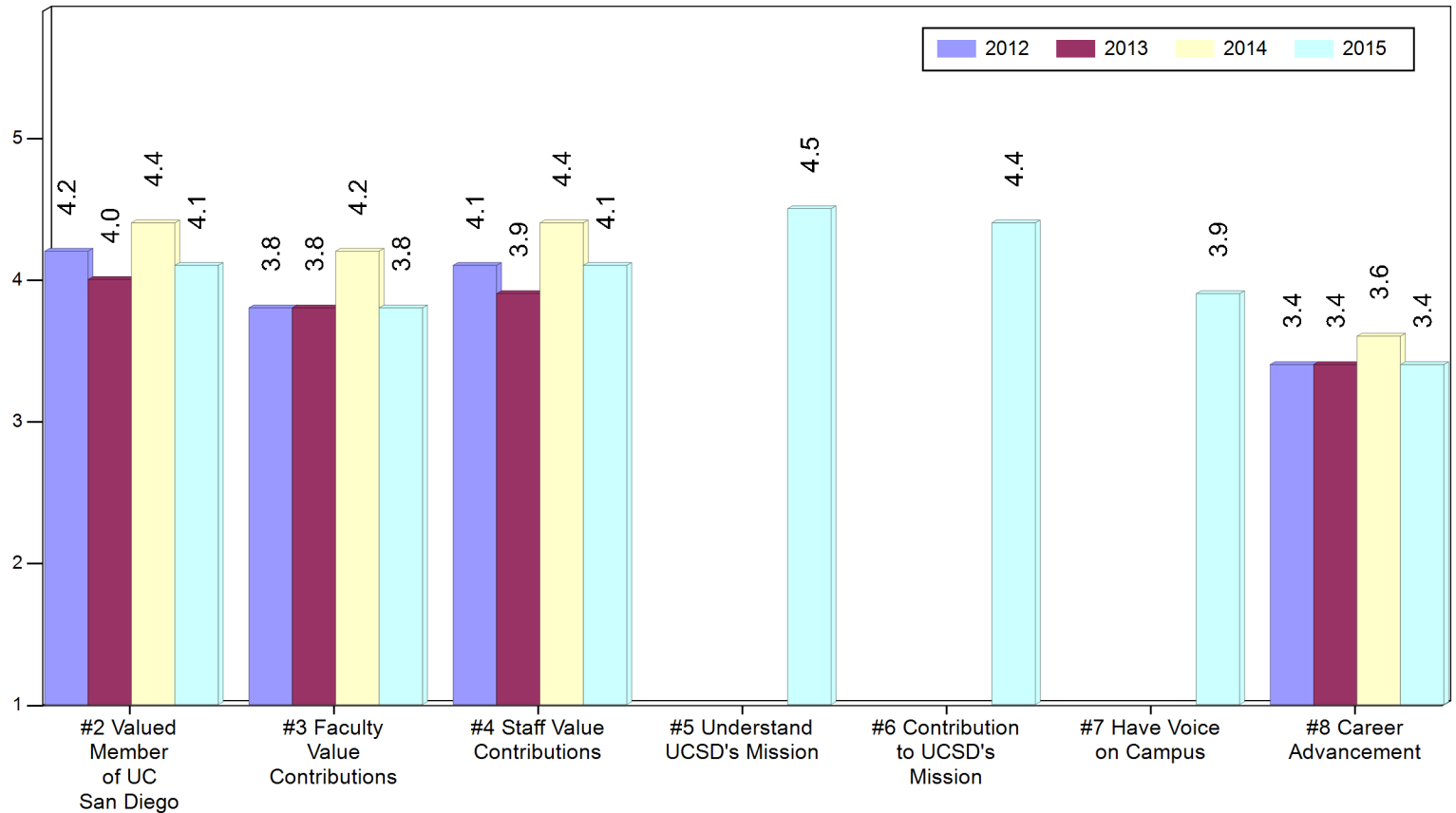
| | Responded/Invited | | Avg. of 53 Questions | Overall Top/Bottom Ratio |
|------|-------------------|-----|----------------------|--------------------------|
| 2015 | n/N = 67/93 | 72% | 4.2 | 12 |
| 2014 | n/N = 42/58 | 72% | 4.3 | 23 |
| 2013 | n/N = 40/55 | 73% | 4.0 | 9 |
| 2012 | n/N = 33/54 | 61% | 4.1 | 10 |

Top/Bottom 2-Box Ratio:

| Year | Top | Bottom | Top | Bottom | Top | Bottom | Top | Bottom |
|------|-----|--------|-----|--------|-----|--------|-----|--------|
| 2015 | 11 | 19 | 19 | 999 | 999 | 13 | 2 | |
| 2014 | 19 | 29 | 20 | * | * | * | 4 | |
| 2013 | 10 | 999 | 8 | * | * | * | 4 | |
| 2012 | 26 | 18 | 14 | * | * | * | 3 | |

2015 Satisfaction with UCSD

- (5) Strongly Agree 32.7%
- (4) Agree 46.1%
- (3) Neutral 15.4%
- (2) Disagree 4.8%
- (1) Strongly Disagree 1.1%



60000 - CHANCELLOR'S UNIT
Department - Mission and Goals - Mean Scores
 University of California, San Diego STAFF @ WORK SURVEY: 2015



Participation Summary:

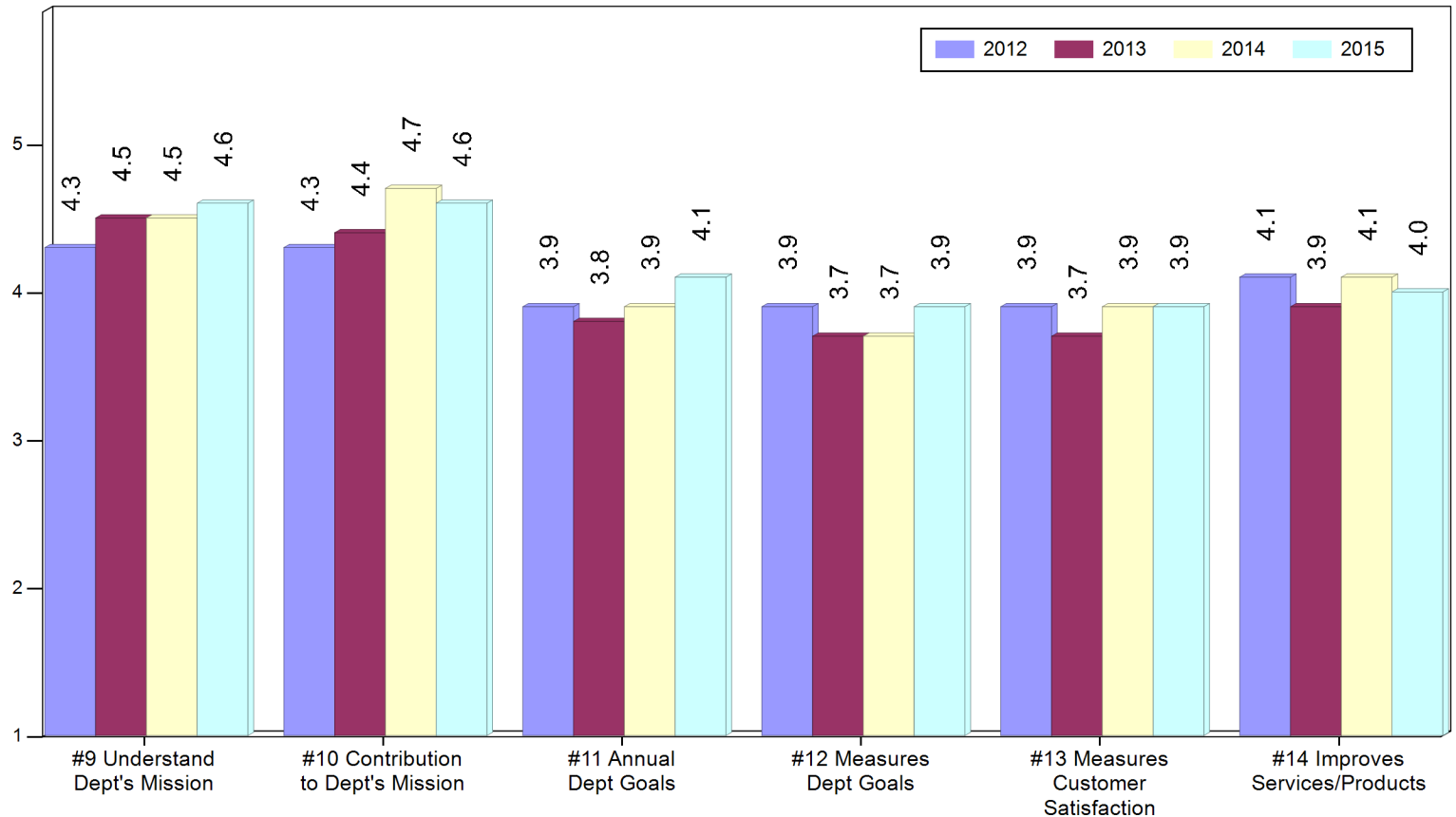
| | Responded/Invited | | Avg. of 53 Questions | Overall Top/Bottom Ratio |
|------|-------------------|-----|----------------------|--------------------------|
| 2015 | n/N = 67/93 | 72% | 4.2 | 12 |
| 2014 | n/N = 42/58 | 72% | 4.3 | 23 |
| 2013 | n/N = 40/55 | 73% | 4.0 | 9 |
| 2012 | n/N = 33/54 | 61% | 4.1 | 10 |

Top/Bottom 2-Box Ratio:

| | | | | | | |
|------|-----|-----|----|---|---|----|
| 2015 | 999 | 999 | 10 | 6 | 6 | 9 |
| 2014 | 999 | 999 | 6 | 6 | 8 | 28 |
| 2013 | 999 | 19 | 5 | 5 | 5 | 7 |
| 2012 | 14 | 27 | 8 | 8 | 7 | 24 |

2015 Dept. - Mission and Goals

(5) Strongly Agree 44.6%
(4) Agree 39.3%
(3) Neutral 9.2%
(2) Disagree 4.5%
(1) Strongly Disagree 2.4%



60000 - CHANCELLOR'S UNIT Department Effectiveness - Mean Scores



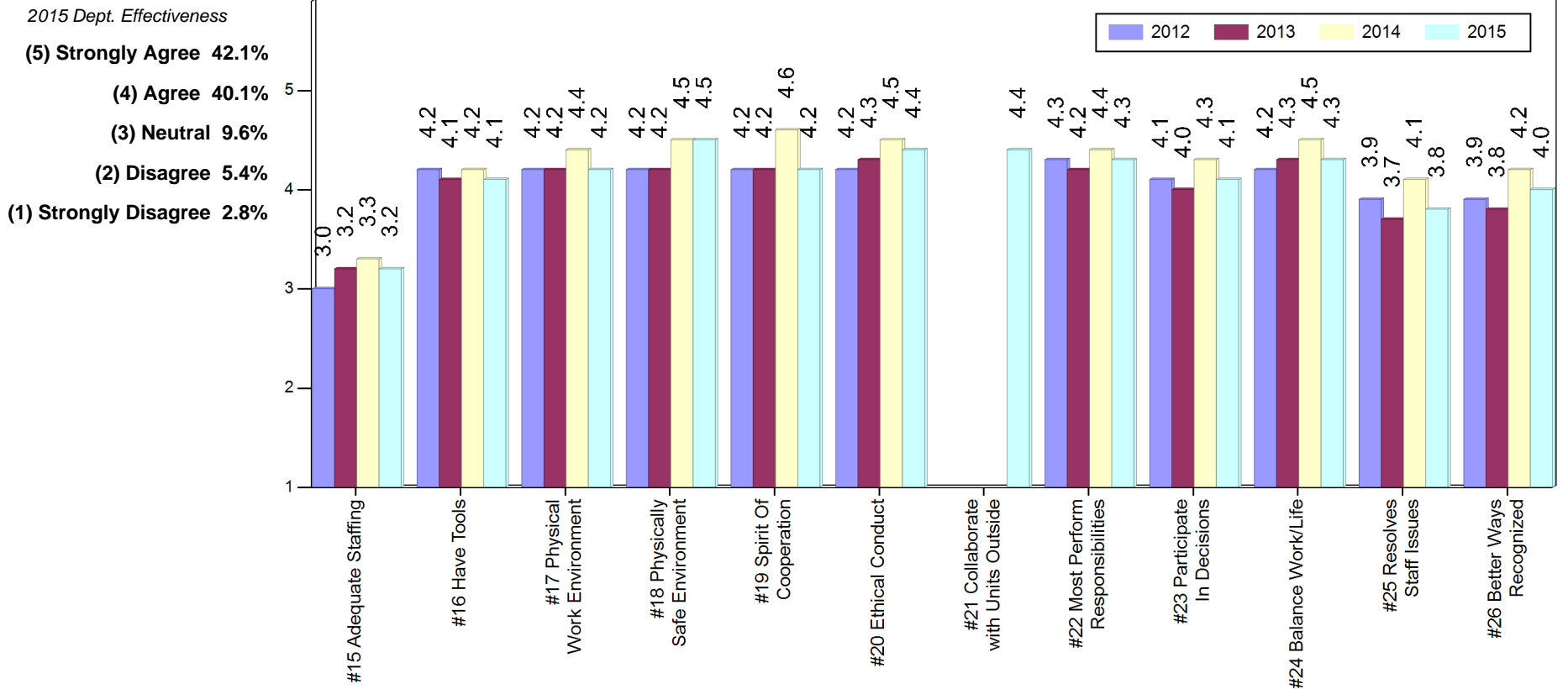
University of California, San Diego STAFF @ WORK SURVEY: 2015

Participation Summary:

| | Responded/Invited | | Avg. of 53 Questions | Overall Top/Bottom Ratio |
|------|-------------------|-----|----------------------|--------------------------|
| 2015 | n/N = 67/93 | 72% | 4.2 | 12 |
| 2014 | n/N = 42/58 | 72% | 4.3 | 23 |
| 2013 | n/N = 40/55 | 73% | 4.0 | 9 |
| 2012 | n/N = 33/54 | 61% | 4.1 | 10 |

Top/Bottom 2-Box Ratio:

| | | | | | | | | | | | | |
|------|---|-----|-----|-----|-----|----|----|-----|----|-----|----|----|
| 2015 | 1 | 18 | 19 | 63 | 14 | 21 | 30 | 21 | 9 | 15 | 6 | 8 |
| 2014 | 2 | 999 | 999 | 999 | 999 | 41 | * | 999 | 38 | 999 | 16 | 33 |
| 2013 | 2 | 11 | 34 | 11 | 8 | 18 | * | 18 | 8 | 11 | 5 | 4 |
| 2012 | 1 | 14 | 28 | 30 | 9 | 29 | * | 32 | 9 | 14 | 8 | 6 |



60000 - CHANCELLOR'S UNIT
Department - Diversity & Climate - Mean Scores
 University of California, San Diego STAFF @ WORK SURVEY: 2015



Participation Summary:

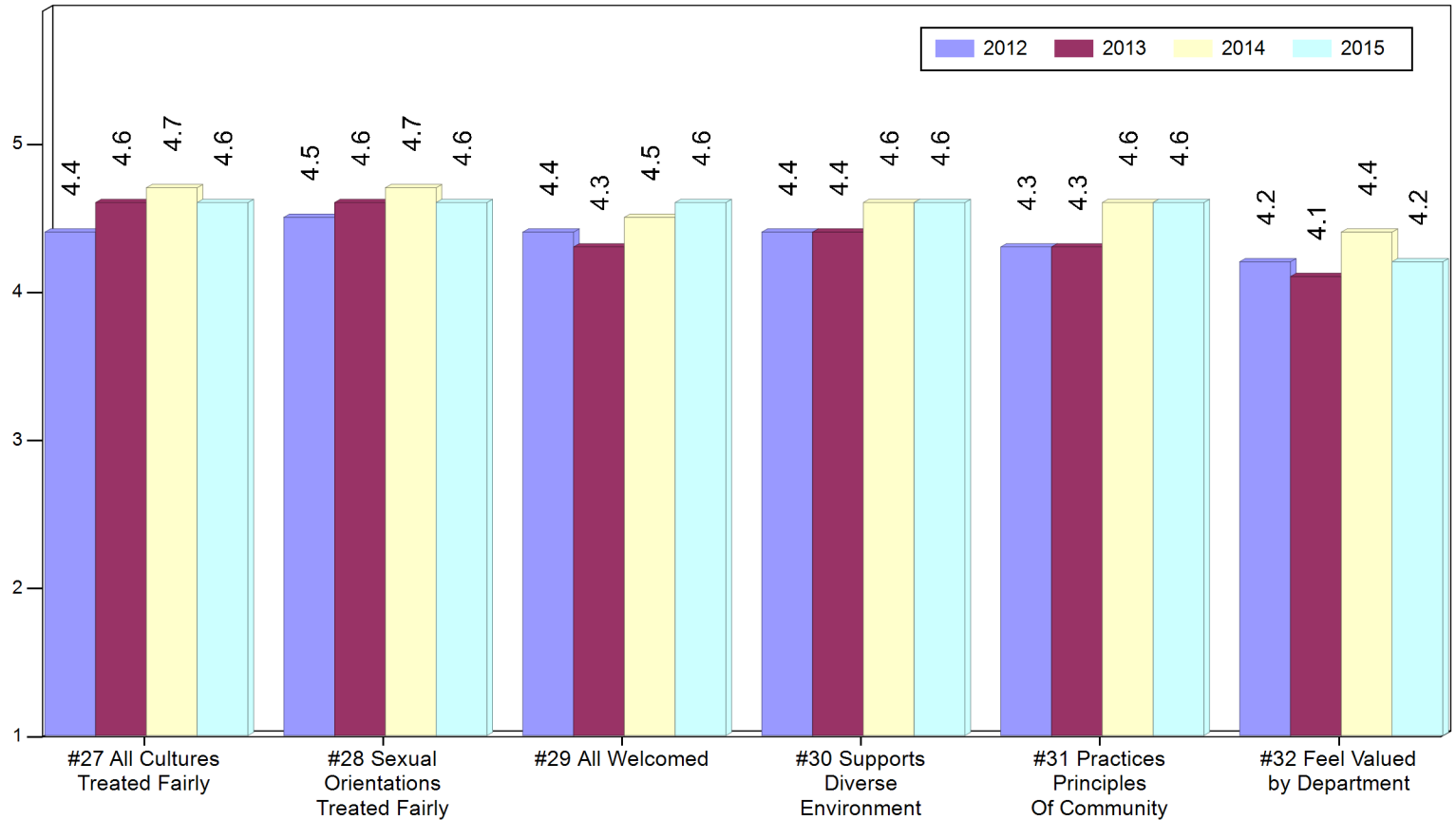
| | Responded/Invited | | Avg. of 53 Questions | Overall Top/Bottom Ratio |
|------|-------------------|-----|----------------------|--------------------------|
| 2015 | n/N = 67/93 | 72% | 4.2 | 12 |
| 2014 | n/N = 42/58 | 72% | 4.3 | 23 |
| 2013 | n/N = 40/55 | 73% | 4.0 | 9 |
| 2012 | n/N = 33/54 | 61% | 4.1 | 10 |

Top/Bottom 2-Box Ratio:

| | | | | | | |
|------|-----|-----|----|-----|-----|----|
| 2015 | 64 | 63 | 63 | 64 | 64 | 8 |
| 2014 | 999 | 999 | 39 | 999 | 999 | 39 |
| 2013 | 39 | 39 | 36 | 36 | 17 | 9 |
| 2012 | 30 | 31 | 30 | 31 | 14 | 13 |

2015 Dept. - Diversity & Climate

(5) Strongly Agree 64.7%
(4) Agree 28.4%
(3) Neutral 4.0%
(2) Disagree 0.7%
(1) Strongly Disagree 2.2%



60000 - CHANCELLOR'S UNIT Supervisor Effectiveness - Mean Scores



University of California, San Diego STAFF @ WORK SURVEY: 2015

Participation Summary:

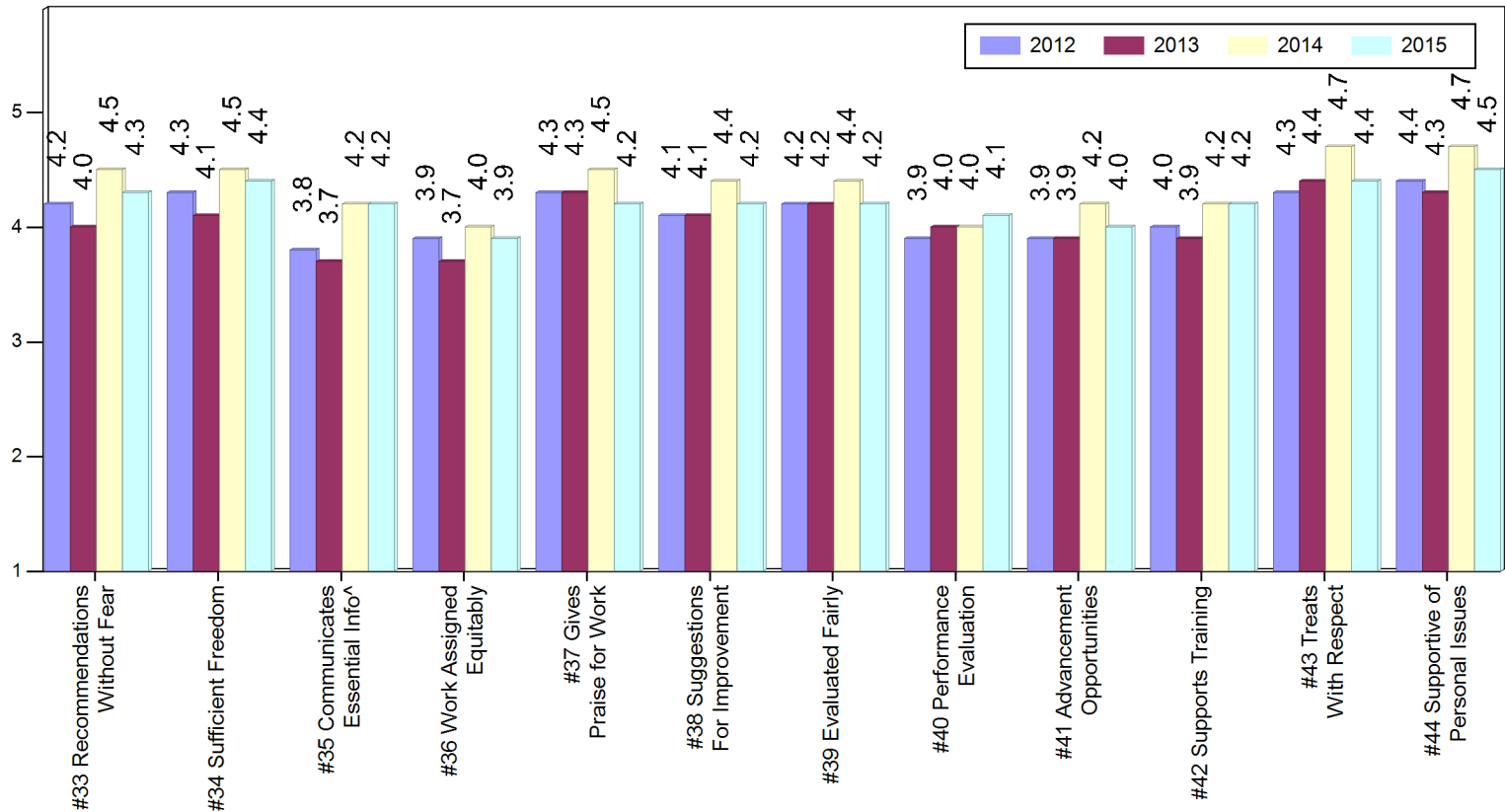
| | Responded/Invited | | Avg. of 53 Questions | Overall Top/Bottom Ratio |
|------|-------------------|-----|----------------------|--------------------------|
| 2015 | n/N = 67/93 | 72% | 4.2 | 12 |
| 2014 | n/N = 42/58 | 72% | 4.3 | 23 |
| 2013 | n/N = 40/55 | 73% | 4.0 | 9 |
| 2012 | n/N = 33/54 | 61% | 4.1 | 10 |

Top/Bottom 2-Box Ratio:

| | | | | | | | | | | | | |
|------|----|----|----|----|-----|----|----|----|----|----|----|-----|
| 2015 | 14 | 15 | 11 | 5 | 9 | 14 | 14 | 16 | 8 | 13 | 12 | 62 |
| 2014 | 20 | 40 | 35 | 8 | 999 | 18 | 36 | 9 | 16 | 11 | 40 | 999 |
| 2013 | 7 | 9 | 4 | 4 | 12 | 17 | 11 | 10 | 4 | 6 | 12 | 11 |
| 2012 | 7 | 9 | 4 | 11 | 14 | 8 | 7 | 8 | 6 | 8 | 15 | 31 |

2015 Supervisor Effectiveness

- (5) Strongly Agree 49.2%**
- (4) Agree 34.1%**
- (3) Neutral 9.7%**
- (2) Disagree 2.5%**
- (1) Strongly Disagree 4.5%**



60000 - CHANCELLOR'S UNIT

Employee Effectiveness and Satisfaction - Mean Scores

University of California, San Diego STAFF @ WORK SURVEY: 2015



Participation Summary:

| | Responded/Invited | | Avg. of 53 Questions | Overall Top/Bottom Ratio |
|------|-------------------|-----|----------------------|--------------------------|
| 2015 | n/N = 67/93 | 72% | 4.2 | 12 |
| 2014 | n/N = 42/58 | 72% | 4.3 | 23 |
| 2013 | n/N = 40/55 | 73% | 4.0 | 9 |
| 2012 | n/N = 33/54 | 61% | 4.1 | 10 |

Top/Bottom 2-Box Ratio:

| | | | | | | | | | | |
|------|----|----|---|-----|----|-----|-----|----|----|-----|
| 2015 | 30 | 6 | 2 | 21 | 9 | 64 | 59 | 14 | 30 | 30 |
| 2014 | 38 | 36 | 3 | 41 | 20 | 999 | 999 | 9 | 33 | 999 |
| 2013 | 8 | 6 | 2 | 999 | 8 | 999 | 35 | 9 | 5 | 34 |
| 2012 | 26 | 3 | 3 | 30 | 9 | 999 | 14 | 22 | 8 | 31 |

2015 Emp. Effectiveness and Sat.

- (5) Strongly Agree 35.1%**
- (4) Agree 46.5%**
- (3) Neutral 11.1%**
- (2) Disagree 4.8%**
- (1) Strongly Disagree 2.5%**

